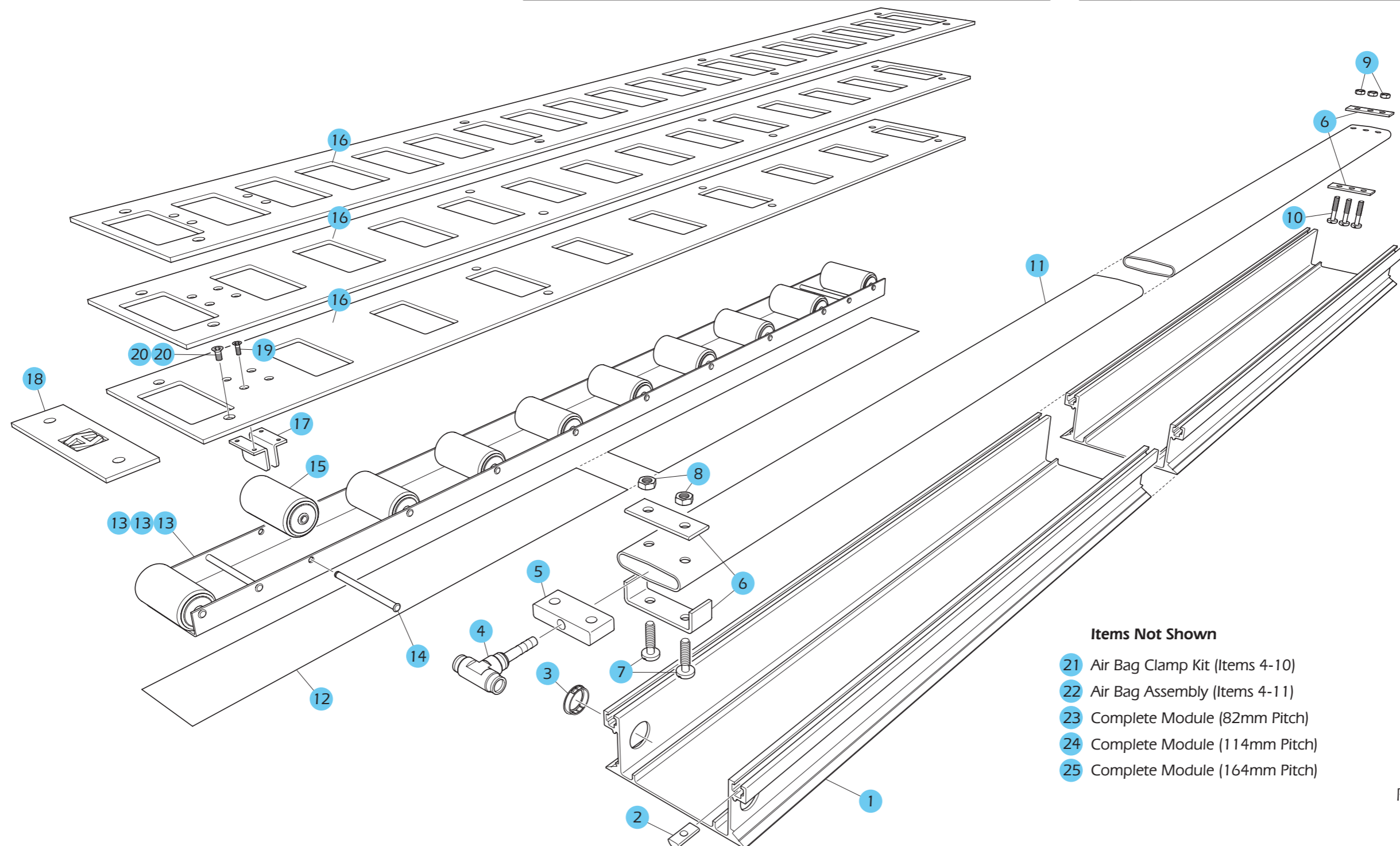




MK8.5.5 Wide Flat Top 5mm: Diagram and Parts List

| ITEM | PART NO. | DESCRIPTION | QTY |
|------|-----------------------|------------------------------|-----|
| 1 | PR08-A01-O-3200 | Main Channel, Extrusion 3.2m | 1 |
| 2 | CNB001 | Nut Bar | 9 |
| 3 | 1EF001 | Main Channel Snap Bushing | 2 |
| 4 | 2BH001 | Air Bag Tee | 1 |
| 5 | 2CE002 | Rubber Insert Plug | 1 |
| 6 | Available in Kit Only | Clamp Plate | 4 |
| 7 | Available in Kit Only | M8 x 30mm Pan Hd Screw | 2 |
| 8 | Available in Kit Only | M8 Nyloc Nut | 2 |
| 9 | Available in Kit Only | M8 Nyloc Nut | 3 |
| 10 | Available in Kit Only | M8 x 20mm Pan Hd Screw | 3 |
| 11 | 2AC002 | Air Bag 3.2m Long | 1 |
| 12 | 1EE003 | Acetal Strip | 1 |
| 13 | PR08-A03-082 | 82mm Pitch | 2 |
| | PR08-A03-114 | 114mm Pitch | 2 |
| | PR08-A03-164 | 164mm Pitch | 2 |

| ITEM | PART NO. | DESCRIPTION | QTY |
|------|----------------|--------------------------------------|-----|
| 14 | CRP002 | MK8 Roller Pin | - |
| 15 | PR08-B01 | MK8 Roller Assembly | - |
| 16 | PR08-A05-082-5 | 82mm Pitch | 2 |
| | PR08-A05-114-5 | 114mm Pitch | 2 |
| | PR08-A05-164-5 | 164mm Pitch | 2 |
| 17 | CGL001 | MK4 Guide Angle | 2 |
| 18 | CLG014 | MK8 5mm Wide Logo Plate | 1 |
| 19 | 4FB004 | M5 x 12mm Taptite Screw | 4 |
| 20 | 4AD027 | Top Plate Screw, M6 x 15mm (US only) | 9 |
| | 4AD029 | Top Plate Screw, M6 x 15mm (ROW) | 9 |
| 21 | PR-ABCKIT2 | Air Bag Clamp Kit | 1 |
| 22 | PR08-A02-3200 | Air Bag Assembly | 1 |
| 23 | PR08.5.5-082 | Complete Module 82mm Pitch | 1 |
| 24 | PR08.5.5-114 | Complete Module 114mm Pitch | 1 |
| 25 | PR08.5.5-164 | Complete Module 164mm Pitch | 1 |



Items Not Shown

- 21 Air Bag Clamp Kit (Items 4-10)
- 22 Air Bag Assembly (Items 4-11)
- 23 Complete Module (82mm Pitch)
- 24 Complete Module (114mm Pitch)
- 25 Complete Module (164mm Pitch)

